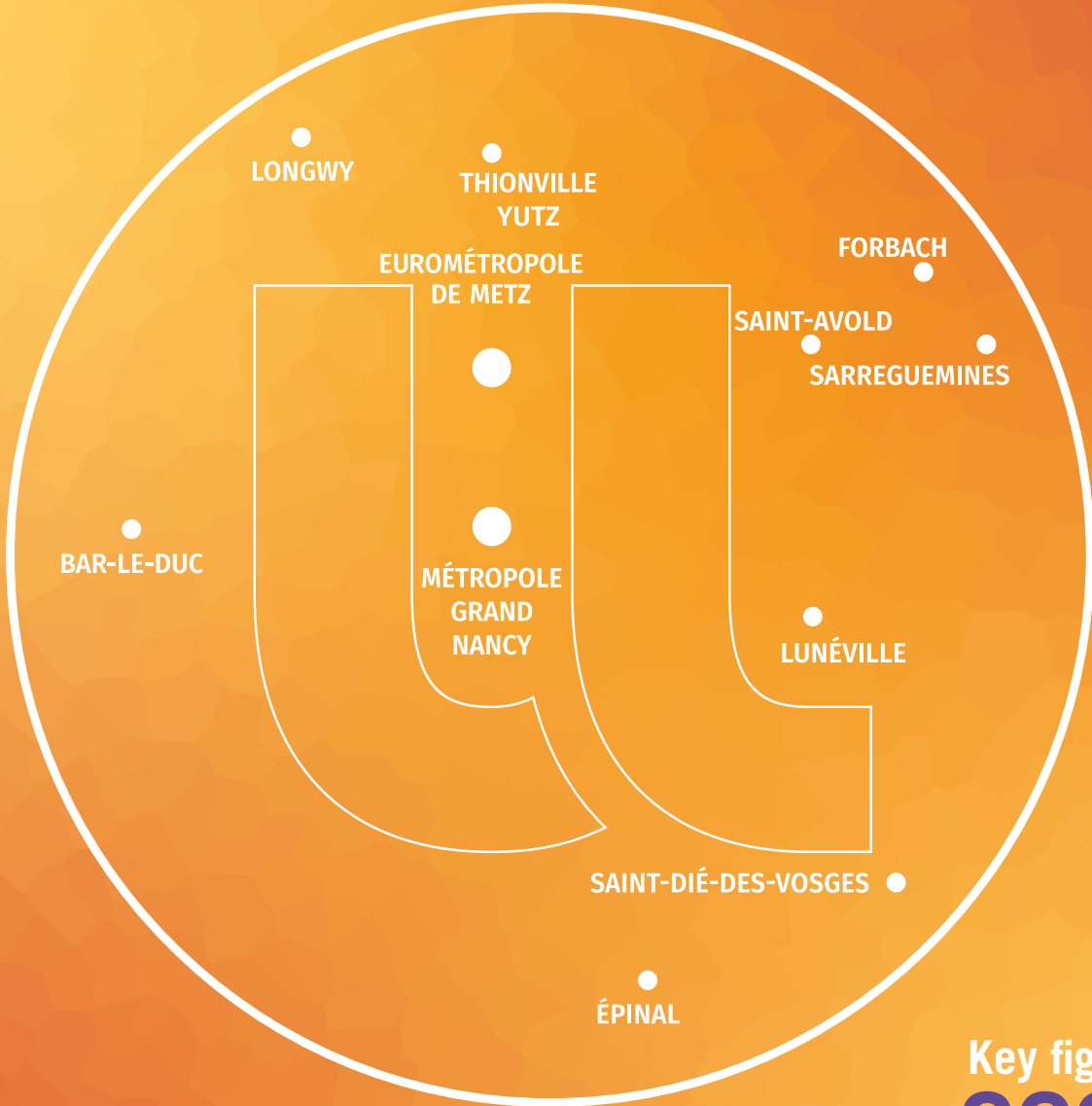




UNIVERSITÉ  
DE LORRAINE



Key figures  
**2024**

**60,000  
students**

spread over  
campuses located in

**2 metropolises,  
12 townns et  
cities**



over 250 facilities



over 7,200 academic and  
administrative staff



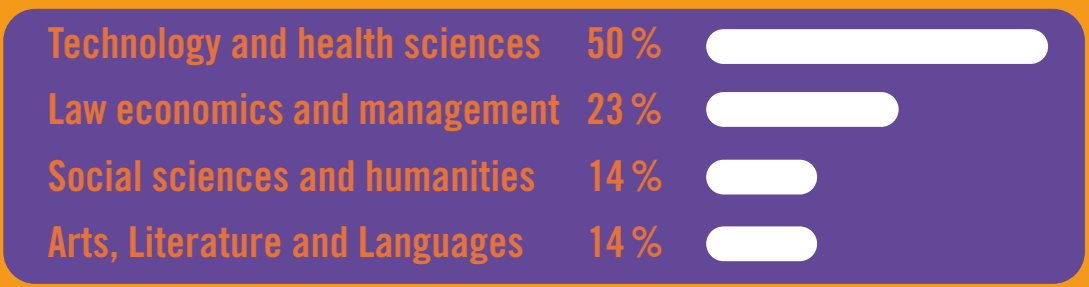
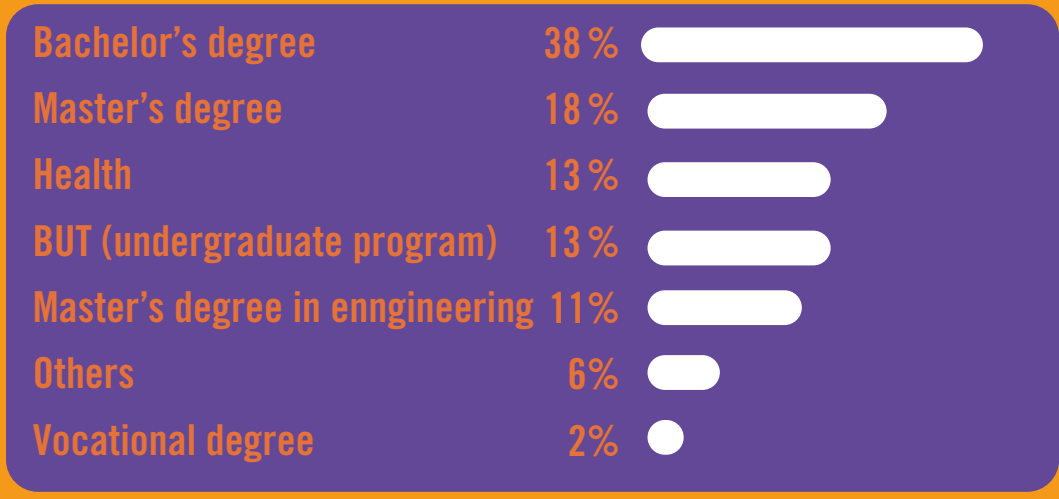
€720 M budget

# PROGRAMS BY ENROLMENT



**60,000**  
students

More than **8,262** students in lifelong learning programs / **559** enrolments for DAEU / **4,209** apprentices / **213** professionalisation contracts



# PROFESSIONAL INSERTION



## INSERTION RATE

after



a vocational degree	94 %	<div style="width: 94%;"></div>
a master's degree	92 %	<div style="width: 92%;"></div>
a master's degree in engineering	96 %	<div style="width: 96%;"></div>
a PhD	92%	<div style="width: 92%;"></div>

## AVERGAE MONTHLY SALARY

after



a vocational degree	€2,053	<div style="width: 41%;"></div>
a master's degree	€2,416	<div style="width: 48%;"></div>
a master's degree in engineering	€2,725	<div style="width: 54%;"></div>
a PhD	€3,015	<div style="width: 60%;"></div>

# A UNIVERSITY THAT PROMOTES ENTREPRENEURSHIP



**571**

students-entrepreneurs  
assisted

**1<sup>st</sup>** UNIVERSITY

in France in terms of  
entrepreneurship

**8,439** STUDENTS

are made aware of  
entrepreneurship

**over 100 students**

have developed an activity (business  
creation or takeover, association...)

**91 AWARDS WON**

in local, regional or national scale  
for a total amount of

**€79,050**



# RESEARCH



**over 4,400**  
ACADEMIC AND  
RESEARCH STAFF



**3,400**  
NEW PUBLICATIONS



**over 1,800**  
PHD STUDENTS



**413** THESIS defended  
including 45 joint PhDs with  
partner universities



**60** RESEARCH UNITS  
including  
**28** JOINT UNITS



**over 220**  
PATENT FAMILIES



**10** SCIENTIFICS CENTERS



**74** BRANDS et  
**186** SOFTWARES



**8** DOCTORAL SCHOOLS



**5** STARTUPS created in 2023

# INTERNATIONAL



**over 9,500**  
international STUDENTS  
(1 in 6)

**Top 10**  
represented nationalities



Erasmus + mobility

**122** outgoing STAFF  
**1,026** outgoing STUDENTS

mobility outside  
the Erasmus program

**501** outgoing STUDENTS

**45 %** international  
PHD STUDENTS

over **500** RESEARCHERS  
welcome by Euraxess  
services of Metz and Nancy

**508** HOSTING  
AGREEMENTS

# UniGR GROUP



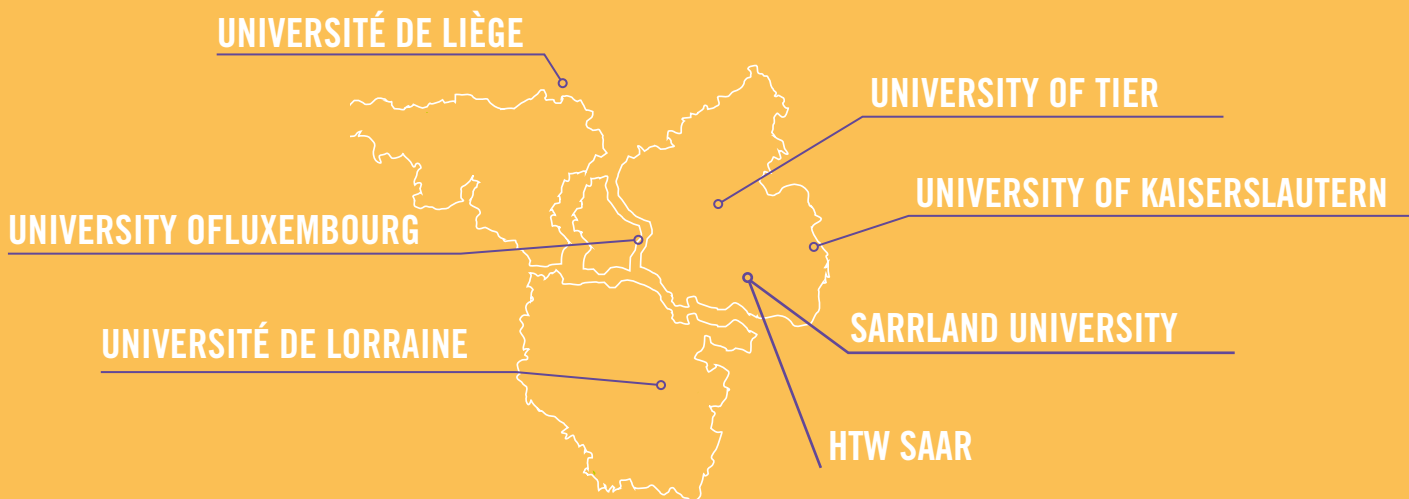
**7 UNIVERSITIES**

**4 COUNTRIES**

**152,500 STUDENTS**

**30 CROSS-COUNTRY AT EVERY DEGREE LEVEL**

**3 INTERDISCIPLINARY CENTERS OF EXPERTISE**





# LORRAINE UNIVERSITY OF EXCELLENCE



**6 BIG CHALLENGES**

related to the major transitions of the 21<sup>st</sup> century



**15 PROGRAMS**



**10.5 M€ BUDGET**



**60% INFRASTRUCTURES**

that have responded to the call for expression of interest has been labelled Infra + (53 over 88)



**135 PUBLICATIONS**

from LUE projects

# HEALTH CARE



**26,264** CONSULTATIONS  
all over medical procedures



**8,888** HEALTH CHECKS



**2,048** PREVENTIVE MEDICAL CHECK-UPS  
for international students (from non EU countries)



**6,784** INTERVIEWS WITH SOCIAL SERVICES



**4,691** SOCIAL INTERVIEWS

# HANDICAP



**1,372 STUDENTS HELPED**  
by the Office for students with disabilities

**316 STUDENTS SUPPORTED**  
by peer-to-peer learning (secretary, pair,  
reader-writer...)



**135 STUDENTS RECRUITED**  
by Université de Lorraine  
for sharing notes

# SPORTS



**71** SPORT ACTIVITIES  
available for students and academic and  
administrative staff



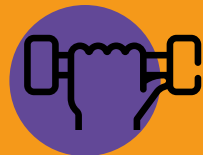
**4,200** SPORTS PRACTITIONERS  
per week



**219** PROFESSIONAL ATHLETES  
amongst the students



**4** SPORTS FACILITIES  
including a pool



**12,000** HOURS OF CLASSES  
per year

# CULTURE

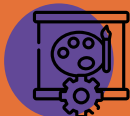


**DISCORD**

**2,017** members

**4 WORKSHOPS FOR 26 SESSIONS**

**e.MDE**



**11 WORKSHOPS**

**MDE Lorraine Sud**

**8 WORKSHOPS**

**MDE Lorraine Nord**



**TWITCH**

**27h** live streaming

# CULTURE



espace  
bernard-marie  
**koltès**  
écritures contemporaines direction artistique lee fou messica

**7** COMPANIES RECEIVED

**8** RECORDINGS AND UPLOADS  
of stage plays at Espace Bernard-Marie Koltès

**Arts and cultural education Actions**  
AT ESPACE BERNARD-MARIE KOLTÈS:

**47** SCHOOL PARTNERSHIPS AND COURSES OF STUDIES

**2,922** PUPILS RECEIVED

**6** COURSES STUDIES WELCOMED FOR THE SHOWS

**22** SCHOOL PERFORMANCES in amphitheatre

**33**  
SHOWS PERFORMED

**67**  
THEATRE  
PERFORMANCES

**8,415**  
SPECTATORS

# UNIVERSITY LIBRARIES



**25**  
**LIBRARIES**  
open for everyone



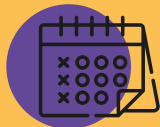
**278,000**  
**LENDING BOOKS**  
or renewed



**2,000,000**  
**ENTRANCES**



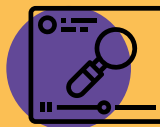
**1,200**  
**LENDING LAPTOPS**



**160**  
**CULTURAL AND SCIENTIFIC**  
events this year



**840**  
**RESEARCHERS ASSISTED**  
to HAL and to search and edition  
data



**20,000**  
**PEOPLE TRAINED**  
to documentary research



**3,900,000**  
**DOWNLOADS**  
of articles, thesis and  
dissertations

# STUDENTS INITIATIVES



**169 ASSOCIATIONS WITH «ASSO UL» LABEL**

**FSDIE** (Solidarity and development fund for student initiatives)



**203**  
**ASSOCIATIONS**  
have submitted an application



**653,320 €** ALLOWED  
to the FSDIE



**335**  
**FUNDING**  
**APPLICATIONS**



**27** FORMATION DAYS  
provided to the student  
associations managers



**311**  
**PROJECTS** supported



**1,311** B2E  
(Student commitment bonus)



# ID+ LORRAINE FONDATION



**226 PRIVATE DONATIONS**



**137 CORPORATE PATRONS**



**DONATIONS COLLECTED IN 2023: €2,226,420**



**69 PROJECTS FUNDED**



including

**12 CHAIRS**

# ORION



2,646

PARTICIPANTS TO THE 29 ORION EVENTS



1,061

STUDENTS AND PHDS have participated in ORION programs in 2022/23  
including



62 MEMBERS OF 10 ORION CLUBS

460 STUDENTS IN 23 PRACTICAL CLASSES OF EXCELLENCE

14

INTERNATIONAL MOBILITIES



55

SCHOLARSHIP HOLDERS



473

PARTICIPANTS TO THE SOFT SKILLS WORKSHOPS

# SIRIUS



AROUND **1,300** PEOPLE SURVEYED  
FOR THE COMMUNICATION STRATEGY



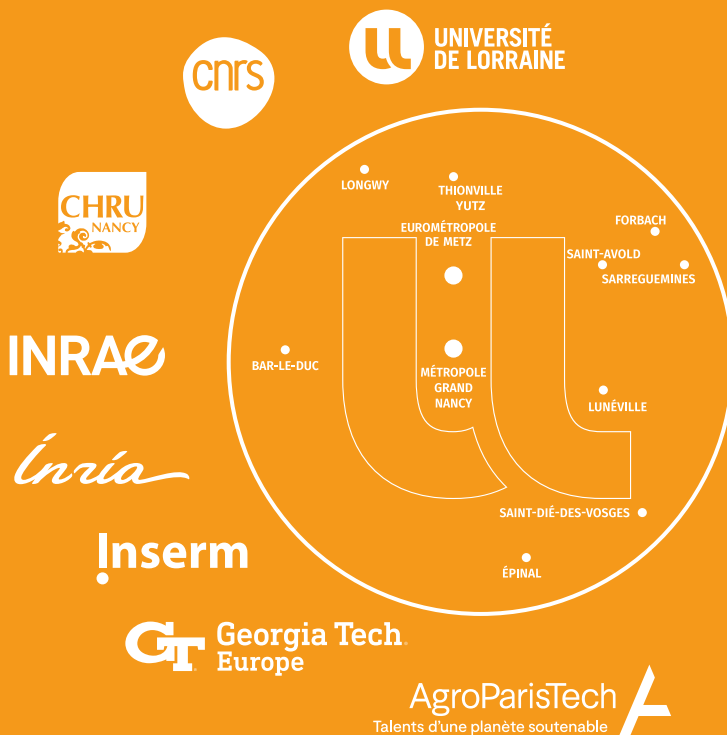
**17**  
PUBLIC RELATIONS ACTIONS  
AND **110** PUBLICATIONS  
IN THE MEDIAS



**40**  
AMBASSADORS INVOLVED IN THE DEEP  
CHANGE LAB



**1**  
SPACE FOR INNOVATION'S FEDERATION  
WITH **10** OPENLABS IN LORRAINE



RESPONSABILITY  
CREATIVITY  
REFLEXIVITY  
SOLIDARITY  
UNIVERSITY

[univ-lorraine.fr](http://univ-lorraine.fr)



## Lorraine Coordination and Scientific Orientation Committee Sponsors



INRAE

Inria

Inserm



HR EXCELLENCE IN RESEARCH

LOIRRAINE  
VOUS REVELEZ



UNIVERSITÉ DE LA  
GRANDE RÉGION  
UNIVERSITÄT DER  
GROSSREGION